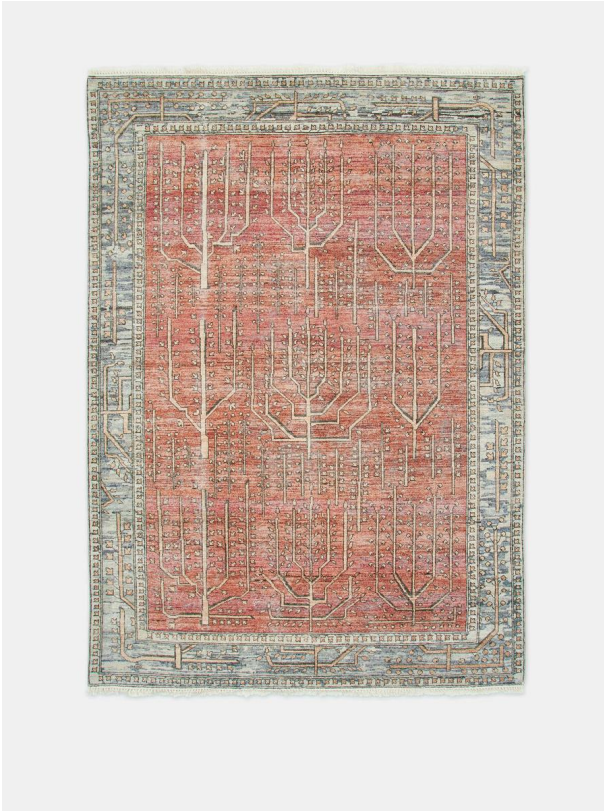


SOHO HOME



## Jaipur Rug, Rust, 20 X 30cm (swatch)

\$25 Regular

\$21 Membership

### Sizes

12'0" x 15'1", 7.8 x 11.8" (Swatch)

### Product details

Inspired by classic Persian rugs, our Jaipur style is hand-knotted in India from 100% wool pile. Intricate leaves and line-drawn motifs are layered onto a rust base with a border in tonal blue and pink. The rug has a worn, vintage-style finish to create a lived-in feel, reminiscent of the styles seen throughout Soho House Mumbai.

### Dimensions

Product dimensions: H20 x W30 x D1cm / H7" x W11" x D0.4"

Product weight: 0.25kg / 0.6lbs

Packaged or boxed weight: 1kg / 2.2lbs

## Details

Care instructions: Vacuum regularly on a low setting. Do not use heavy duty vacuums. Blot spills Immediately with a soft, dry cloth, spot clean with mild soap if needed; occasional professional cleaning may be required. Do not dry clean. If loose end appears, do not pull; Instead clip with scissors and tie a knot at the loose ends. Avoid direct exposure to sunlight. Rotate rug occasionally to equalize wear, if the rug gets wet, place it on a flat surface to dry. Store your rug by rolling, and wrap with cloth for protection. Rug pad recommended.

Composition: 100% Wool  
Pile: Wool  
Rug style: Classic  
Technique: Hand Knotted