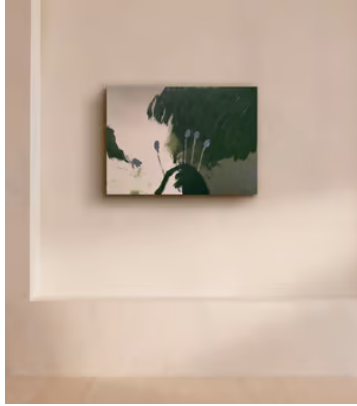


SOHO HOME



'Il Ritorno di Tobia In Vita's Garden 28' by Philip Maltman

\$3,120 Regular price

\$2,652 Member price

An original landscape work inspired by the garden of author, poet and gardener Victoria 'Vita' Mary Sackville-West.

This original landscape is part of a series of works inspired by the artist's visit to the Sissinghurst Castle Garden in Kent, where he "began to think about beautiful plants in shadowy corners". Created using oil on canvas, it imagines "little explosions" of colour and shape.

About the artist

Philip Maltman is an abstract artist shortlisted for the John Moores painting prize. Born in Ayrshire, a historic country on the coast of Scotland, he is known for exploring the littoral zone through his work - the area of shoreline where the sea meets the land.

Dimensions

Dimensions: H50 x W70 x D4cm / H20 x W28 x D2"

Weight: 1kg / 2.2lbs

Details

Frame included: No

