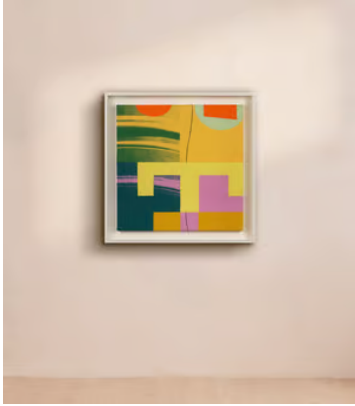


# SOHO HOME



## 'Plan Yellow' by Michelle House

\$3,718 Regular price

\$3,160 Member price

Two sections of textured fabric are printed and stitched together before being stretched over a wooden frame.

This piece is one of three artworks included in the artist's Plan series. Using skills honed over 25 years as an artist, the print is made using a complex, time-consuming process that involves steaming and washing the fabric before each new layer of print is applied.

### About the artist

With a passion for print and colour, London-based abstract artist Michelle House creates unique prints by applying vibrant pigments and dyes to natural materials. Both her printed and painted artworks often use imagery taken from her own photography.

### Dimensions

**Dimensions:** H60 x W60 x D5cm / H24 x W24 x D2"

**Weight:** 5kg / 11lbs

### Details

**Frame:** Framed in a painted white wooden box frame with anti-reflective glass.

**Frame included:** Yes

