

SOHO HOME



'sense Of Place I' By Clare Thatcher

\$1,300 Regular

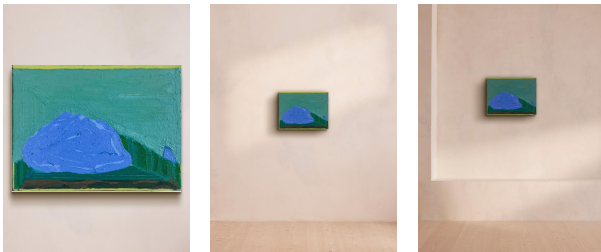
\$1,105 Membership

Product details

Inspiration is taken from the Cornish landscape and works viewed by the artist in Tate St. Ives. Part of an ongoing series, this original abstract painting reflects on the artist's time spent in St. Ives, Cornwall, particularly the Tate gallery and surrounding area. The surface quality and materials used, including oil and pigments on plywood, are integral to the work.

About the artist

Both living and working in Bristol, Clare Thatcher is a figurative painter influenced by the landscapes and locations that have a profound effect on her, particularly those in coastal areas.



Dimensions

Product dimensions: H30 x W40 x D4cm / H12 x W16 x D2"

Product weight: 2kg / 4.4lbs

Details

Frame included: No