

SOHO HOME



'siena 20' By Philip Maltman

£1,200 Regular

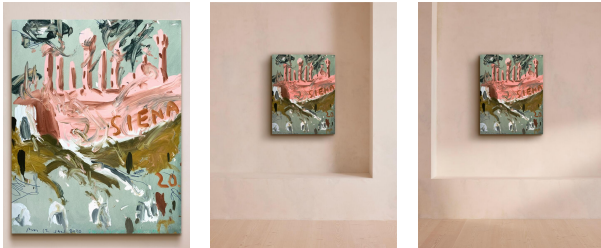
£1,020 Membership

Product details

An abstract depiction of the Tuscan city of Siena, created from oil and crayon on a gesso panel. Painted in pastel shades of pink, lavender and green, this original artwork is one of a series inspired by Giovanni di Lorenzo's 1526 painting, "The Battle at Porta Camollia".

About the artist

Philip Maltman is an abstract artist shortlisted for the John Moores painting prize. Born in Ayrshire, a historic country on the coast of Scotland, he is known for exploring the littoral zone through his work - the area of shoreline where the sea meets the land.



Dimensions

Product dimensions: H50 x W40 x D4cm / H20 x W16 x D1"

Product weight: 4kg / 8.8lbs

Details

Frame included: No