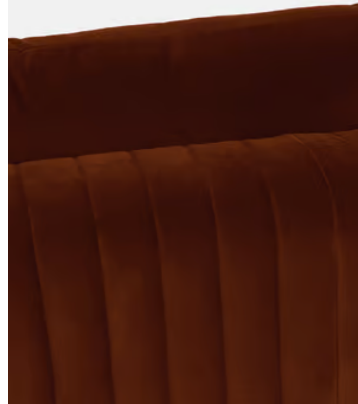
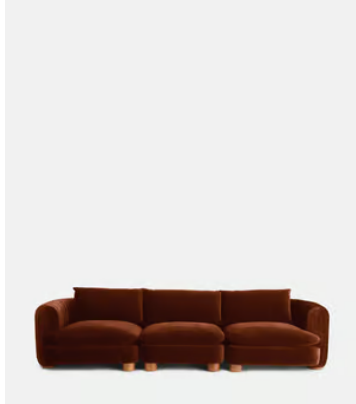


# SOHO HOME



## Vivienne Sectional Sofa, Four Seater, Velvet Rust, US

**\$5,785** Regular price

**\$4,917** Member price

The eighth floor at White City House forms the inspiration for the Vivienne modular sofa. Upholstered in rich velvet, it features pleated stitch detailing, cylindrical legs and a wraparound back. Low lounge sitting makes this piece ideal for cosy evenings. Coordinate and configure with other pieces in the Vivienne collection for the sofa shape of your choice.



### Dimensions

**Product dimensions:** H83 x W332 x D105cm / H32.7 x W130.7 x D41.3"

**Product weight:** 52kg / 114.6lbs

**Packaged or boxed dimensions:** H65 x W124 x D74cm / H25.6 x W48.8 x D29.1"

**Packaged or boxed weight:** 65kg / 143.3lbs

**Number of boxes:** 3

- **Box 1 & 2:** H74 x W124 x D110cm / H29.3 x W48.8 x D43.3"
- **Box 3 & 4:** H74 x W102 x D110cm / H29.3 x W40.3 x D43.3"

### Available in 10 linens



Antique Rose



Bisque



Indigo



Mushroom



Ochre



Olive



Prussian Blue



Sage



Sienna



Wheat

# SOHO HOME

## Available in 10 velvets



Rust



Lichen



Camel



Royal Blue



Porcelain



Mustard



Olive



Taupe



Antique Rose



Grey Blue

## Available in 1 boucle



Natural

## Available in 2 sizes

Three Seater Sofa (H83 x W236 x D105cm / H32.7 x W92.9 x D41.3")

Four Seater Sofa (H83 x W332 x D105cm / H32.7 x W130.7 x D41.3")

## Details

**Arm height:** 28"

**Assembled size:** H33 x W131 x D41"

**Assembly required:** Yes

**Care instructions:** Clean with a mild, water-free, dry-cleaning solvent. Ensure ample ventilation. Occasional vacuuming is recommended. Most stains can be blotted or wiped away with a clean, damp cloth or paper towel; dried stains can be spot cleaned using soap and water or a commercial dry cleaning product. We recommend testing all cleansers in an inconspicuous area before treating your furniture.

**Composition:** Frame: Engineered hardwood. Feet: Birch. Fill: Foam, feather, down and fiber. Fabric: 85% Cotton, 15% Polyester.

**Fabric:** 100% Polyester

**Feet:** Birch

**Frame:** Engineered Hardwood

**Removable cushions:** Yes

**Removable legs:** No

**Seat depth:** 22.4"

**Seat height:** 18.5"

**Seat width:** 36.6"

**Spring count:** 15