

# SOHO HOME

## Noelle Sectional Sofa, Straight Module, Velvet Grey Blue, US

\$3,495 Regular price

\$2,971 Member price

### Dimensions

**Dimensions:** H78.74 x W105.41 x D99.695cm / H31 x W42 x D39"

**Weight:** 52.6kg / 116lbs

**Packaged dimensions:** H85 x W111 x D106cm / H33.5 x W43.8 x D41.8"

**Packaged weight:** 65kg / 143.3lbs

### Details

**Assembly required:** Yes

**Composition:** Frame: Engineered Hardwood. Feet: Oak. Filling: Foam with fiber. Fabric: 85% cotton, 15% polyester.

**Fabric:** 85% Cotton, 15% Polyester

**Feet:** Oak

**Frame:** Engineered Hardwood

**Legs:** Oak

**Removable cushions:** No

**Removable legs:** No

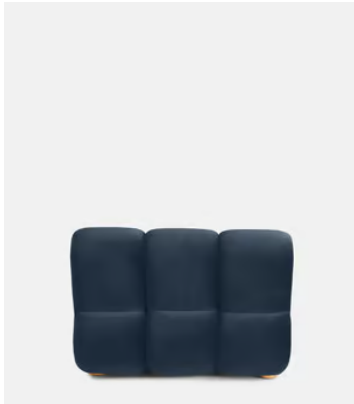
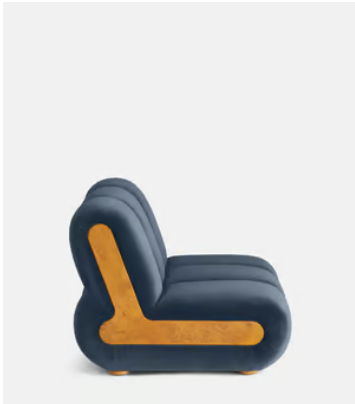
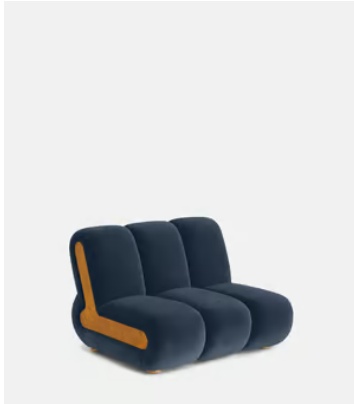
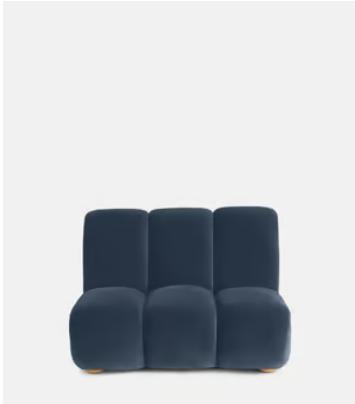
**Seat depth:** 22.8"

**Seat height:** 15.8"

**Seat width:** 41.5"

**Spring count:** 9

**Care instructions:** Professional upholstery cleaning



### Available in 10 velvets



Rust



Lichen



Camel



Royal Blue



Porcelain



Mustard



Olive



Taupe



Antique Rose



Grey Blue

### Available in 2 boucles

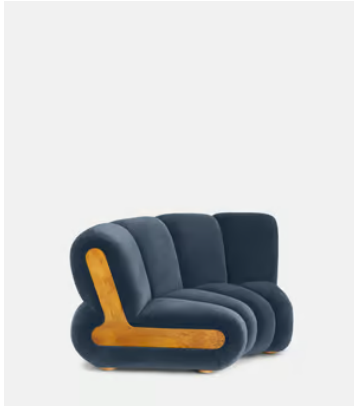
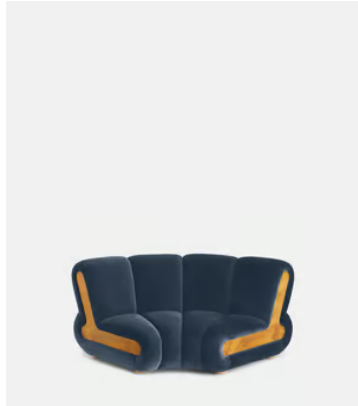


Natural



Pistachio

# SOHO HOME



## Noelle Sectional Sofa, Curved Module, Velvet Grey Blue, US

**\$3,795** Regular price

**\$3,226** Member price

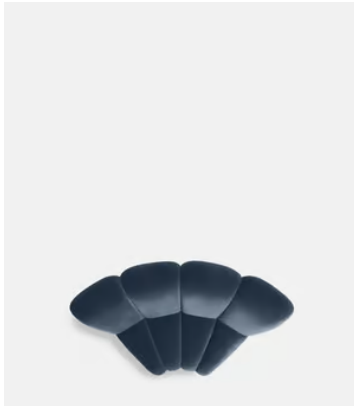
### Dimensions

**Dimensions:** H78.74 x W173.99 x D103.505cm / H31 x W69 x D41"

**Weight:** 67.6kg / 149lbs

**Packaged dimensions:** H85 x W180 x D109cm / H33.5 x W70.8 x D43"

**Packaged weight:** 84kg / 185.2lbs



### Details

**Assembly required:** Yes

**Composition:** Frame: Engineered Hardwood. Feet: Oak. Filling: Foam with fiber. Fabric: 85% cotton, 15% polyester.

**Fabric:** 85% Cotton, 15% Polyester

**Feet:** Oak

**Frame:** Engineered Hardwood

**Legs:** Oak

**Removable cushions:** No

**Removable legs:** No

**Seat depth:** 22.8"

**Seat height:** 15.8"

**Seat width:** 22"

**Spring count:** 12

**Care instructions:** Professional upholstery cleaning

### Available in 10 velvets



Rust



Lichen



Camel



Royal Blue



Porcelain



Mustard



Olive



Taupe



Antique Rose



Grey Blue

### Available in 2 boucles



Natural



Pistachio

# SOHO HOME



## Noelle End Table

**\$1,395** Regular price

**\$1,186** Member price

Part of our Noelle modular sofa range, the Noelle end table has been crafted in aged Pippy Oak veneer for a lived-in look and feel. Resting on book-matched burl feet, this low occasional style takes its design cues from 180 House and is ideal placed beside our Noelle sofa or another sofa from the Soho Home collection.



### Dimensions

**Dimensions:** H26 x W73 x D55cm / H10.2 x W28.7 x D21.7"

**Weight:** 15kg / 33.1lbs

**Packaged dimensions:** H36 x W85 x D67cm / H14.2 x W33.5 x D26.4"

**Packaged weight:** 19kg / 41.9lbs

### Details

**Assembly required:** Yes

**Feet:** Plastic Glide

**Frame:** Oak Wood

**Material:** Oak Wood, Plywood and Pippy Oak Veneer

**Removable legs:** Yes

**Care instructions:** Dust often using a clean, soft, dry and lint-free cloth. Blot spills immediately and wipe with a clean, damp, cloth. We do not recommend the use of chemical cleansers, abrasives or furniture polish. Avoid contact with water and other liquids.

### Available in 10 velvets



Rust



Lichen



Camel



Royal Blue



Porcelain



Mustard



Olive



Taupe



Antique Rose



Grey Blue

### Available in 2 boucles



Natural



Pistachio