

# SOHO HOME

## Noelle Sectional Sofa, Straight Module, Velvet Antique Rose, US

\$3,495 Regular price

\$2,971 Member price

A series of modular silhouettes in boucle upholstery designed to adapt to any living space.

Comprising straight and curved sections, the modular design of our Noelle sofa means it can adapt to your room, whether you want a social area or a space focused on relaxation. Inspired by the interiors of 180 House, it is fully upholstered in boucle that contrasts against pippy oak veneer sides.

### Dimensions

**Dimensions:** H78.74 x W105.41 x D99.695cm / H31 x W42 x D39"

**Weight:** 52.6kg / 116lbs

**Packaged dimensions:** H85 x W111 x D106cm / H33.5 x W43.8 x D41.8"

**Packaged weight:** 65kg / 143.3lbs

### Details

**Assembly required:** Yes

**Composition:** Frame: Engineered Hardwood. Feet: Oak. Filling: Foam with fiber. Fabric: 85% cotton, 15% polyester.

**Fabric:** 85% Cotton, 15% Polyester

**Feet:** Oak

**Frame:** Engineered Hardwood

**Legs:** Oak

**Removable cushions:** No

**Removable legs:** No

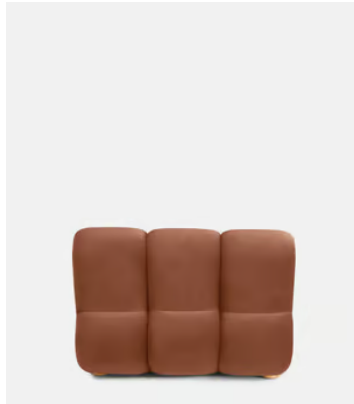
**Seat depth:** 22.8"

**Seat height:** 15.8"

**Seat width:** 41.5"

**Spring count:** 9

**Care instructions:** Professional upholstery cleaning



### Available in 10 velvets



Rust



Lichen



Camel



Royal Blue



Porcelain



Mustard



Olive



Taupe



Antique Rose



Grey Blue

### Available in 4 boucles



Natural



Pistachio



Coral



Kelp

# SOHO HOME

## Noelle Sectional Sofa, Curved Module, Velvet Antique Rose, US

**\$3,795** Regular price

**\$3,226** Member price

A series of modular silhouettes in boucle upholstery designed to adapt to any living space.

Comprising straight and curved sections, the modular design of our Noelle sofa means it can adapt to your room, whether you want a social area or a space focused on relaxation. Inspired by the interiors of 180 House, it is fully upholstered in boucle that contrasts against pippy oak veneer sides.

### Dimensions

**Dimensions:** H78.74 x W173.99 x D103.505cm / H31 x W69 x D41"

**Weight:** 67.6kg / 149lbs

**Packaged dimensions:** H85 x W180 x D109cm / H33.5 x W70.8 x D43"

**Packaged weight:** 84kg / 185.2lbs

### Details

**Assembly required:** Yes

**Composition:** Frame: Engineered Hardwood. Feet: Oak. Filling: Foam with fiber. Fabric: 85% cotton, 15% polyester.

**Fabric:** 85% Cotton, 15% Polyester

**Feet:** Oak

**Frame:** Engineered Hardwood

**Legs:** Oak

**Removable cushions:** No

**Removable legs:** No

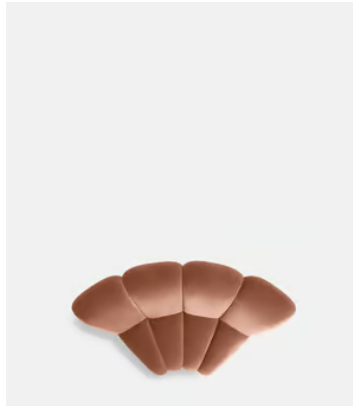
**Seat depth:** 22.8"

**Seat height:** 15.8"

**Seat width:** 22"

**Spring count:** 12

**Care instructions:** Professional upholstery cleaning



### Available in 10 velvets



Rust



Lichen



Camel



Royal Blue



Porcelain



Mustard



Olive



Taupe



Antique Rose



Grey Blue

### Available in 4 boucles



Natural



Pistachio



Coral



Kelp

# SOHO HOME



## Noelle End Table

**\$1,395** Regular price

**\$1,186** Member price

Part of our Noelle modular sofa range, the Noelle end table has been crafted in aged Pippy Oak veneer for a lived-in look and feel. Resting on book-matched burl feet, this low occasional style takes its design cues from 180 House and is ideal placed beside our Noelle sofa or another sofa from the Soho Home collection.



### Dimensions

**Dimensions:** H26 x W73 x D55cm / H10.2 x W28.7 x D21.7"

**Weight:** 15kg / 33.1lbs

**Packaged dimensions:** H36 x W85 x D67cm / H14.2 x W33.5 x D26.4"

**Packaged weight:** 19kg / 41.9lbs

### Details

**Assembly required:** Yes

**Feet:** Plastic Glide

**Frame:** Oak Wood

**Material:** Oak Wood, Plywood and Pippy Oak Veneer

**Removable legs:** Yes

**Care instructions:** Dust often using a clean, soft, dry and lint-free cloth. Blot spills immediately and wipe with a clean, damp, cloth. We do not recommend the use of chemical cleansers, abrasives or furniture polish. Avoid contact with water and other liquids.

### Available in 10 velvets



Rust



Lichen



Camel



Royal Blue



Porcelain



Mustard



Olive



Taupe



Antique Rose



Grey Blue

### Available in 4 boucles



Natural



Pistachio



Coral



Kelp