

SOHO HOME

Noelle Sectional Sofa, Straight Module, Velvet Royal Blue, US

\$3,495 Regular price

\$2,971 Member price

A series of modular silhouettes in boucle upholstery designed to adapt to any living space.

Comprising straight and curved sections, the modular design of our Noelle sofa means it can adapt to your room, whether you want a social area or a space focused on relaxation. Inspired by the interiors of 180 House, it is fully upholstered in boucle that contrasts against pippy oak veneer sides.

Dimensions

Dimensions: H78.74 x W105.41 x D99.695cm / H31 x W42 x D39"

Weight: 52.6kg / 116lbs

Packaged dimensions: H85 x W111 x D106cm / H33.5 x W43.8 x D41.8"

Packaged weight: 65kg / 143.3lbs

Details

Assembly required: Yes

Composition: Frame: Engineered Hardwood. Feet: Oak. Filling: Foam with fiber. Fabric: 85% cotton, 15% polyester.

Fabric: 85% Cotton, 15% Polyester

Feet: Oak

Frame: Engineered Hardwood

Legs: Oak

Removable cushions: No

Removable legs: No

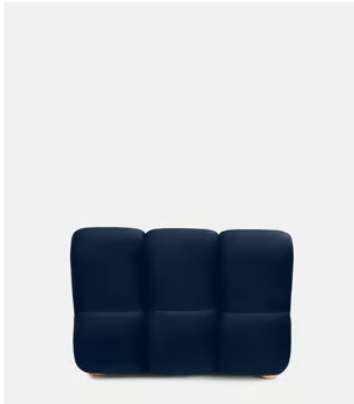
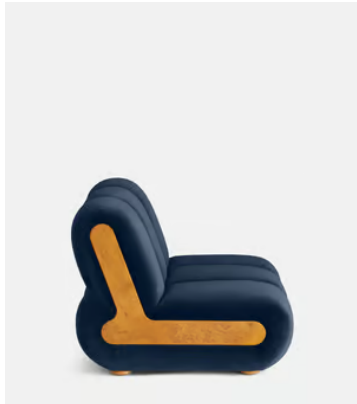
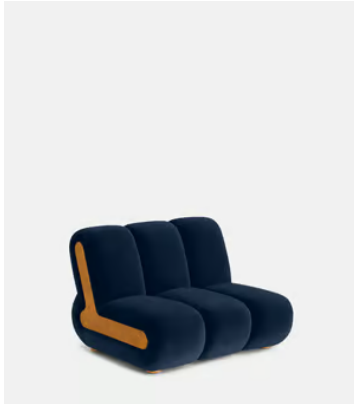
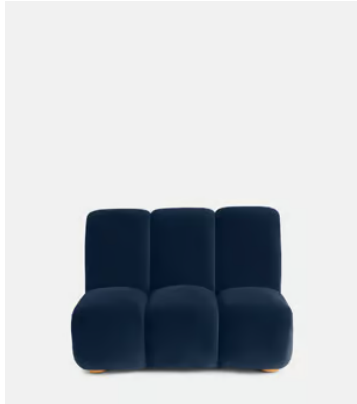
Seat depth: 22.8"

Seat height: 15.8"

Seat width: 41.5"

Spring count: 9

Care instructions: Professional upholstery cleaning



Available in 10 velvets



Rust



Lichen



Camel



Royal Blue



Porcelain



Mustard



Olive



Taupe



Antique Rose



Grey Blue

Available in 4 boucles



Natural



Pistachio



Coral



Kelp

SOHO HOME

Noelle Sectional Sofa, Curved Module, Velvet Royal Blue, US

\$3,795 Regular price

\$3,226 Member price

A series of modular silhouettes in boucle upholstery designed to adapt to any living space.

Comprising straight and curved sections, the modular design of our Noelle sofa means it can adapt to your room, whether you want a social area or a space focused on relaxation. Inspired by the interiors of 180 House, it is fully upholstered in boucle that contrasts against pippy oak veneer sides.

Dimensions

Dimensions: H78.74 x W173.99 x D103.505cm / H31 x W69 x D41"

Weight: 67.6kg / 149lbs

Packaged dimensions: H85 x W180 x D109cm / H33.5 x W70.8 x D43"

Packaged weight: 84kg / 185.2lbs

Details

Assembly required: Yes

Composition: Frame: Engineered Hardwood. Feet: Oak. Filling: Foam with fiber. Fabric: 85% cotton, 15% polyester.

Fabric: 85% Cotton, 15% Polyester

Feet: Oak

Frame: Engineered Hardwood

Legs: Oak

Removable cushions: No

Removable legs: No

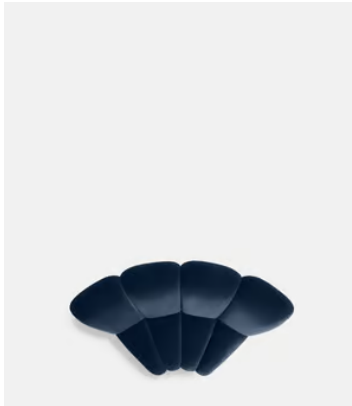
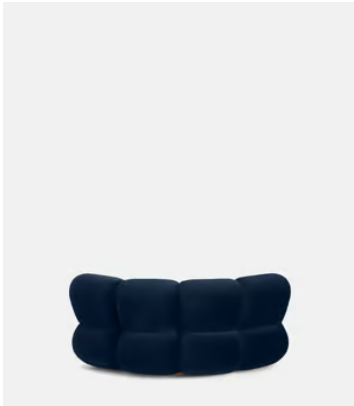
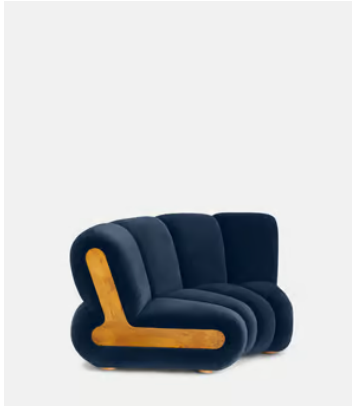
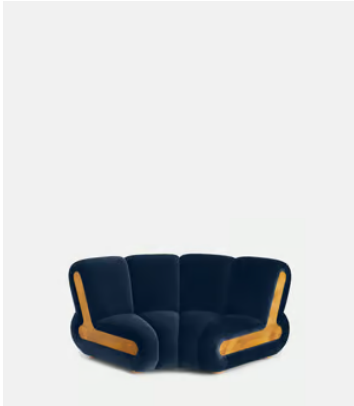
Seat depth: 22.8"

Seat height: 15.8"

Seat width: 22"

Spring count: 12

Care instructions: Professional upholstery cleaning



Available in 10 velvets



Rust



Lichen



Camel



Royal Blue



Porcelain



Mustard



Olive



Taupe



Antique Rose



Grey Blue

Available in 4 boucles



Natural



Pistachio



Coral



Kelp

SOHO HOME



Noelle End Table

\$1,395 Regular price

\$1,186 Member price

Part of our Noelle modular sofa range, the Noelle end table has been crafted in aged Pippy Oak veneer for a lived-in look and feel. Resting on book-matched burl feet, this low occasional style takes its design cues from 180 House and is ideal placed beside our Noelle sofa or another sofa from the Soho Home collection.



Dimensions

Dimensions: H26 x W73 x D55cm / H10.2 x W28.7 x D21.7"

Weight: 15kg / 33.1lbs

Packaged dimensions: H36 x W85 x D67cm / H14.2 x W33.5 x D26.4"

Packaged weight: 19kg / 41.9lbs

Details

Assembly required: Yes

Feet: Plastic Glide

Frame: Oak Wood

Material: Oak Wood, Plywood and Pippy Oak Veneer

Removable legs: Yes

Care instructions: Dust often using a clean, soft, dry and lint-free cloth. Blot spills immediately and wipe with a clean, damp, cloth. We do not recommend the use of chemical cleansers, abrasives or furniture polish. Avoid contact with water and other liquids.

Available in 10 velvets



Rust



Lichen



Camel



Royal Blue



Porcelain



Mustard



Olive



Taupe



Antique Rose



Grey Blue

Available in 4 boucles



Natural



Pistachio



Coral



Kelp