



Antonella Chandelier

£2,340

Regular

£1,872

Membership

Product details

The Antonella pendant is a statement light inspired by the central chandelier that hangs in the bar at Babington House. Made in Italy, the chandelier is pieced together from mouth-blown glass and formed into a tapered silhouette with a swirled design. Display it in large spaces, a room with high ceilings or a stairwell, to bring a touch of glamour to your interiors.

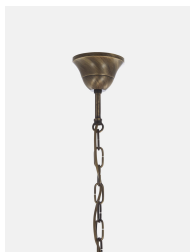
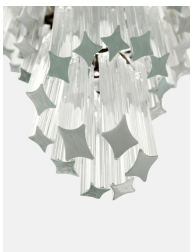
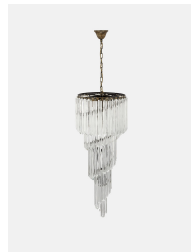
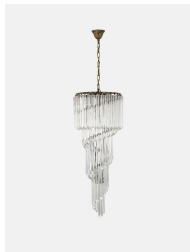
- Chandelier in mouth blown Murano glass
- Tapered silhouette
- Swirled design
- Made in Italy using traditional techniques
- Ideal for larger spaces and high ceilings
- Inspired by the chandelier in the bar at Babington House

Dimensions

Product dimensions: H100 x W40 x D40cm / H39.4 x W15.7 x D15.7"

Product weight: 28kg / 61.7lbs

Number of boxes: 3



Details

Material: Brass and Glass
Cable & Ceiling Rose
Height Adjustable: Yes
Minimum Height: 43.3"
Maximum Height: 66.9"
Ceiling Rose Diameter: 39.3" diameter

Bulb Specification
Bulb(s) Included: No
Bulb required: 1 / E26 / 60 WATTS

Assembly & Technical
Assembly Required: No
Electrician Required: Yes
Voltage: 110-120V
Compliance: UL
IP Rating: IP20
Environment: Dry
Electrical Class: Class 11
Dimmable: Yes. Please consult a qualified electrician regarding compatible bulbs for your dimmer switch system.
Care Instructions: Clean with a soft dry cloth only. Do not use polishing agents, harsh chemicals or abrasive cleaners as they may damage the finish. Always switch off the electricity supply before cleaning.