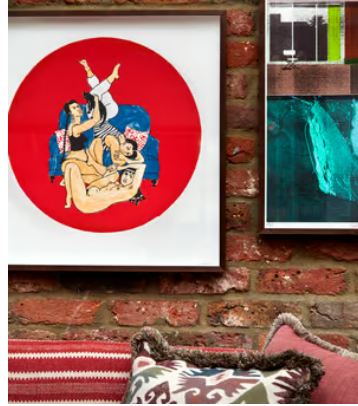


SOHO HOME



Eliza Hopewell Les Demoiselles d'Lewisham

\$365 Regular price

\$310 Member price

Eliza Hopewell turns the traditional craft of plate painting on its head with her subversive illustrated plates which can be seen in the piglet rooms at Soho Farmhouse. Each layer of this four-colour screen print is hand painted, capturing Hopewell's brush marks and creating a subtle texture. Kate Bryan, Soho House Head of Collections, says, 'She's really diversifying the representation of women in art. This image is great because you've got these three women and they just seem to be hanging out, playing with a cat and celebrating their bodies. It's a really charming, intense, very real portrayal of womanhood in the 21st century. Her mark making seems relatively simple but it belies an extraordinary gift she has for rendering character in quite a few lines. This print is a 'tondo' (meaning circle) because it is an evocation of one of her plates.'

Dimensions

Dimensions: H58 x W55 x D55cm / H23 x W22 x D22"

Weight: 1kg / 2.2lbs

Details

4 Colour Screenprint on Somerset Satin 300 gsm paper

Please note that frame is not included.