

SOHO HOME



Helibronn Rug, Rust, 170 X 240cm

\$1,271 Regular

\$1,017 Membership

Sizes

5'7" x 7'10", 7.8 x 11.8" (Swatch)

Product details

The Helibronn rug showcases a hand-drawn abstract design that's been transferred onto a wool-viscose fabric with a slightly distressed finish to create a rustic effect. Complete with tassel ends, the rug takes inspiration from asemic writing and references the vintage-inspired designs seen throughout Soho House Berlin.

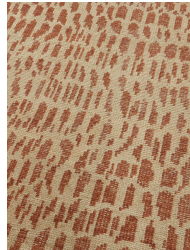
Dimensions

Product dimensions: H170 x W240 x D3cm / H7'10" x W5'7" x D1"

Product weight: 12kg / 26.5lbs

Packaged or boxed dimensions: H172 x W24 x D24cm / H67.7 x W9.4 x D9.4"

Packaged or boxed weight: 12kg / 26.5lbs



Details

Assembled size: 170 x 240cm

Assembly required: No

Care instructions: Vacuum regularly on a low setting. Do not use heavy duty

vacuums. Blot spills Immediately with a soft, dry cloth, spot clean

with mild soap if needed; occasional professional cleaning may be

required. Do not dry clean. If loose end appears, do not pull;

Instead clip with scissors and tie a knot at the loose ends. Avoid

direct exposure to sunlight. Rotate rug

occasionally to equalize

wear, if the rug gets wet, place it on a flat

surface to dry. Store

your rug by rolling, and wrap with cloth for

protection. Rug pad

recommended. with a soft, dry cloth, spot clean with mild soap if

needed; occasional professional cleaning may be required. Do not

dry clean. If loose end appears, do not pull;

Instead clip with

scissors and tie a knot at the loose ends. Avoid direct exposure to

sunlight. Rotate rug occasionally to equalize

wear, if the rug gets

wet, place it on a flat surface to dry. Store your

rug by rolling,

and wrap with cloth for protection. Rug pad

recommended.

Composition: 43% Viscose, 40% Wool, 17% Lyocell

Construction: Hand knotted

Fabric: Viscose, Wool, Lyocell

Handmade: Yes

Pile: Wool/Viscose

Rug style: Abstract