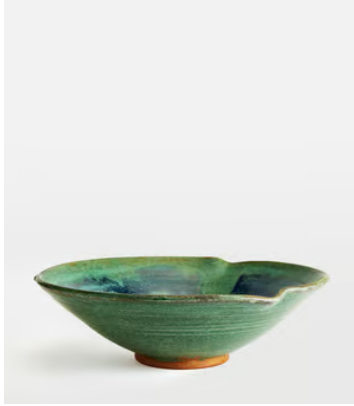


SOHO HOME



Lyndale Bowl

~~\$300~~ \$210 Regular price

~~\$255~~ \$168 Member price

The Lyndale bowl reflects the colours and textures seen throughout our dynamic House in White City. The interior features fractured glass in the centre that has been created in a kiln for a bold design effect.

Dimensions

Dimensions: H17 x W36 x D15cm / H6.7 x W14.2 x D5.9"

Weight: 8kg / 17.6lbs

Packaged weight: 8kg / 17.6lbs

Details

Material: Ceramic

Dishwasher Safe: No

Microwave Safe: No

Oven Safe: No