



Franklin Dresser Mirror

\$1,195 Regular

\$1,016 Membership

Product details

This triptych vanity mirror is constructed from antique brass with a tapered silhouette that references 1950s styles. Inspired by the vintage pieces seen at Soho House 76 Dean Street, the mirror has two adjustable outer leaves that subtly curve towards the larger central pane, with brass feet to support.

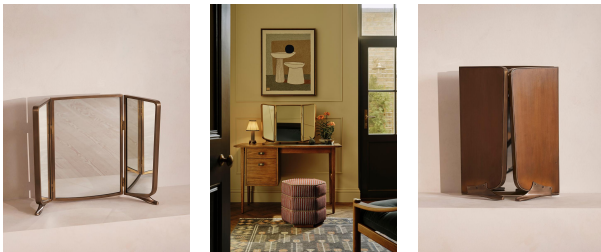
Dimensions

Product dimensions: H50.8 x W73.2 x D2.5cm / H20 x W28.8 x D1"

Product weight: 12.6kg / 27.8lbs

Packaged or boxed dimensions: H74 x W16 x D116cm / H29.1 x W6.3 x D45.7"

Packaged or boxed weight: 17.16kg / 37.8lbs



Details

Assembly required: No

Bathroom safe: No

Care instructions: Clean with a soft dry cloth only. Do not use polishing agents, harsh chemicals or abrasive cleaners as they may damage the finish.

Material: Brass and Glass

Wall fixtures included: No

Wall leaning only: No