



## Sogni Celeste Pendant, Us

£1,095

Regular

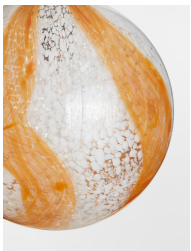
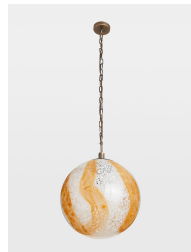
£931

Membership

### Product details

As seen in 180 House, the Celeste globe pendant is mouth-blown in Venice with an organic color powder to create a white speckled finish. The unique, handmade nature of this technique means that the markings on each pendant will vary - a true, one-of-a-kind piece. Suspended onto an antique brass adjustable chain, the globe pendant is set to bring a decorative touch to any room.

- Mouth-blown Venetian glass
- Made by skilled artisans in Venice
- Amber colorway
- White markings
- Pattern may vary due to the handmade nature of the process
- Antique brass finish
- Adjustable chain
- Requires one x E26/ 60W max bulb
- As seen in 180 House



### Dimensions

Product dimensions: H140 x W40 x D40cm / H55.1 x W15.7 x D15.7"

Product weight: 10kg / 22lbs

Packaged or boxed dimensions: H60 x W50 x D45cm / H23.6 x W19.7 x D17.7"

Packaged or boxed weight: 12kg / 26.5lbs

## Details

Material: Blackened Metal and Glass

Cable & Ceiling Rose

Cable Length: 39.3"

Height Adjustable: Yes

Minimum Height: 15.7"

Maximum Height: 55.1"

Ceiling Rose Diameter: 4.7"

Bulb Specification

Bulb(s) Included: No

Bulb Required: 1 / E26 / 60W Maximum

Assembly & Technical

Assembly Required: Yes

Electrician Required: Yes

Voltage: 110-120V

Compliance: UL

IP Rating: IP20

Environment: Dry

Electrical Class: Class 11

Dimmable: Yes. Please consult a qualified electrician regarding compatible bulbs for your dimmer switch system.

Care Instructions: Clean with a soft dry cloth only. Do not use polishing agents, harsh chemicals or abrasive cleaners as they may damage the finish. Always switch off the electricity supply before cleaning.