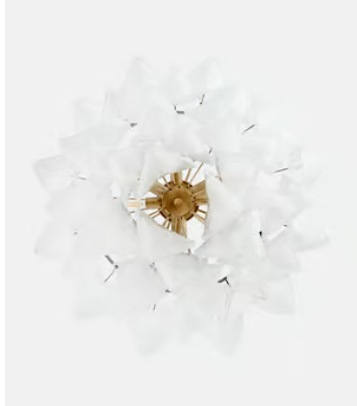


SOHO HOME



Ina Chandelier, US

\$4,995 Regular price

\$4,246 Member price

As seen at DUMBO House, our Ina chandelier is handmade from Venetian glass, which is mouth-blown by skilled artisans in Venice using age-old tools and techniques. The three-tiered chandelier features petal-like white glass segments suspended from an aged, brass-finish iron frame. Hang it in a living area to bring the elegance of Soho House West Hollywood into your home.

Dimensions

Dimensions: H61 x W69 x D69cm / H24 x W27.2 x D27.2"

Weight: 40kg / 88.2lbs

Packaged dimensions: H62 x W62 x D62cm / H24.4 x W24.4 x D24.4"

Packaged weight: 40kg / 88.2lbs

Number of boxes: 2

- **Box 1:** H62 x W62 x D62cm / H24.4 x W24.4 x D24.4"
- **Box 2:** H55 x W75 x D50cm / H21.7 x W29.5 x D19.7"

Details

Assembly required: Yes, specialist

Bulb required: 7 / E12 / 9W Maximum

Bulb(s) included: No

Ceiling rose diameter: 1.7"

Dimmable: Yes, please consult a qualified

Electrician required: Yes

Height adjustable: Yes

Lighting Certification US: UL

Maximum height: 17"

Minimum height: 9.3"

Voltage: 110-120V

Care instructions: Clean with a soft dry cloth only. Do not use polishing agents, harsh chemicals or abrasive cleaners as they may damage the finish. Always switch off the electricity supply before cleaning.