

SOHO HOME



Edna Pendant, Us

\$1,245 Regular

\$996 Membership

Product details

Inspired by Little House West Hollywood, the Edna pendant is handmade by Venetian artisans from mouth-blown amber glass. Suspended onto an adjustable tensile cable, the 1970s-style pendant is set to bring a pop of color to any space.

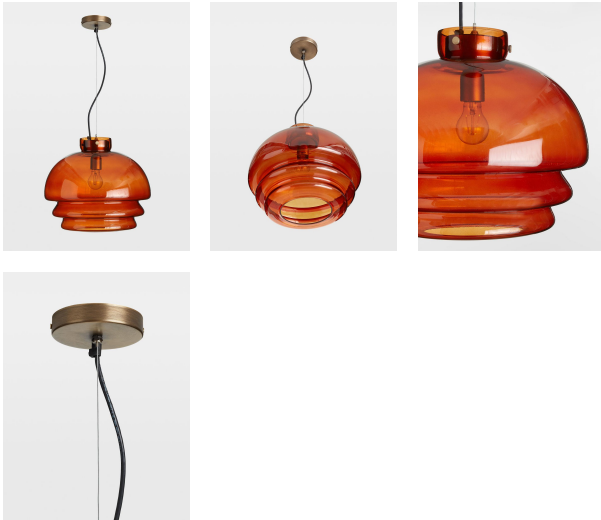
Dimensions

Product dimensions: H136 x W42 x D42cm / H53.5 x W16.5 x D16.5"

Product weight: 10kg / 22lbs

Packaged or boxed dimensions: H65 x W55 x D75cm / H25.6 x W21.7 x D29.5"

Packaged or boxed weight: 10kg / 22lbs



Details

Material: Blackened Metal and Italian Glass

Cable & Ceiling Rose

Cable Length: 3.9"

Height Adjustable: Yes

Minimum Height: 14.1"

Maximum Height: 53.5"

Ceiling Rose Diameter: 4.7"

Bulb Specification

Bulb(s) Included: No

Bulb Required: 1 / E26 / 60W Maximum

Assembly & Technical

Assembly Required: Yes

Electrician Required: Yes

Voltage: 110-120V

Compliance: UL

IP Rating: IP20

Environment: Dry

Electrical Class: Class 11

Dimmable: Yes. Please consult a qualified electrician regarding compatible bulbs for your dimmer switch system.

Care Instructions: Clean with a soft dry cloth only. Do not use polishing agents, harsh chemicals or abrasive cleaners as they may damage the finish. Always switch off the electricity supply before cleaning.