



## Atlee Bottle Opener, Red

\$85 Regular

\$72 Membership

Available in



Red



White



Green

### Product details

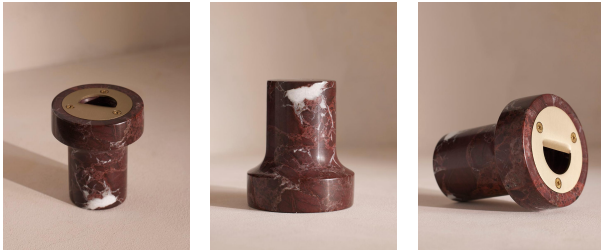
The Atlee bottle opener is crafted from a weighty Rosso Levanto marble from Turkey, with deep cherry-red tones and white veining. Inspired by the marble decor seen throughout 180 House, the bar utensil is fitted with a stainless-steel bottle opener and built-in magnet.

### Dimensions

Product dimensions: H8.6 x W7.5 x D7.5cm / H3.4 x W3 x D3"

Product weight: 0.6kg / 1.3lbs

Packaged or boxed weight: 1kg / 2.2lbs



### Details

Assembly required: No

Care instructions: Handwash only. Wipe with a soft, dry cloth. Do not use abrasives or cleaners as they may damage the finish.

Dishwasher safe: No

Material: Marble

Microwave safe: No

Oven safe: No