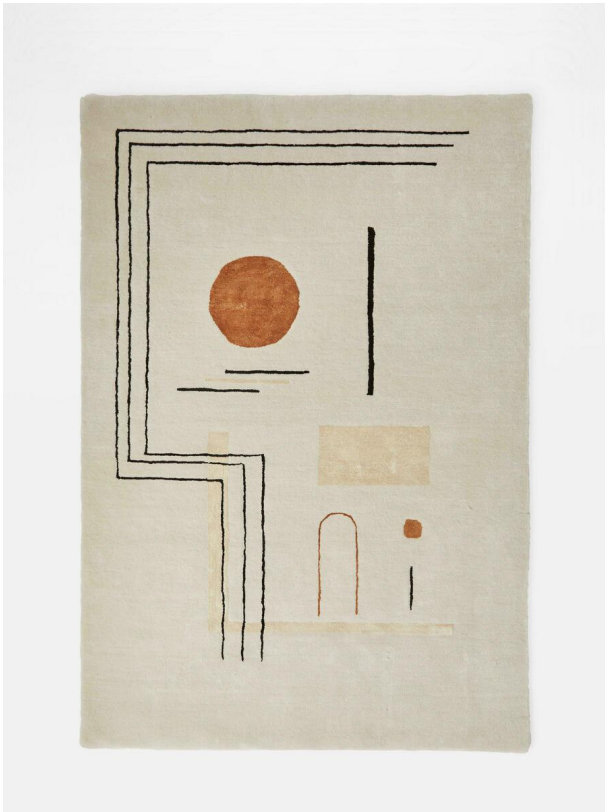


SOHO HOME



## Edgar Rug, 170 X 240cm

\$1,121 Regular

\$897 Membership

### Sizes

5'7" x 7'10", 6'7" x 9'10", 7.8 x 11.8" (Swatch)

### Product details

The Edgar rug is hand-tufted from 100% wool in India by skilled artisans. Our in-house team created a geometric design, blending simple shapes and stripes to suit contemporary and minimalist interiors. Lay it out in an office or living space to mirror the textiles at Soho House Amsterdam.

### Dimensions

Product dimensions: H170 x W240 x D3cm / H7'10" x W7'10" x D1"

Product weight: 16kg / 35.3lbs

Packaged or boxed dimensions: H20 x W174 x D20cm / H7.9 x W68.5 x D7.9"

Packaged or boxed weight: 16kg / 35.3lbs

## Details

Care instructions: Vacuum regularly on a low setting. Do not use heavy duty vacuums. Blot spills immediately with a soft, dry cloth, spot clean with mild soap if needed; occasional professional cleaning may be required. Do not dry clean. If loose end appears, do not pull; Instead clip with scissors and tie a knot at the loose ends. Avoid direct exposure to sunlight. Rotate rug occasionally to equalize wear, if the rug gets wet, place it on a flat surface to dry. Store your rug by rolling, and wrap with cloth for protection. Rug pad recommended.

Composition: 92% Wool, 8% Viscose

Construction: Hand Tufted

Fabric: Wool, Viscose

Handmade: Yes

Pile: Wool/Viscose

Rug style: Abstract

Technique: Hand Tufted