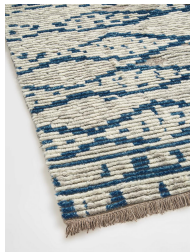


SOHO HOME



## Tiva Rug Navy, 200 X 300cm

\$865 Regular

\$692 Membership

### Product details

Drawing inspiration from Soho House Mumbai, the Tiva rug is hand-knotted in India from 100% wool with tiny tufts in the rows for an artisanal finish. A cross between a traditional and flatweave style, Tiva is characterised by geometric diamonds, lines and dotted detail, which bring character and colour to any room.

### Dimensions

Product dimensions: H200 x W300 x D3cm / H6'6" x W9'10" x D1"

Product weight: 14kg / 30.9lbs

Packaged or boxed dimensions: H24 x W203 x D24cm / H9.4 x W79.9 x D9.4"

Packaged or boxed weight: 18kg / 39.7lbs

### Details

Rug style: Textural

Technique: Hand Knotted