

SOHO HOME



Patchouli Clyde Marble Candle, Large

~~\$210~~ \$147 Regular price

~~\$179~~ \$118 Member price

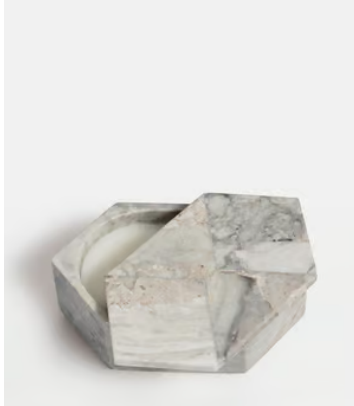
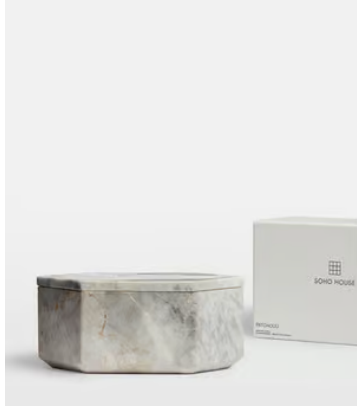
Crafted from Vitoria marble, which is known for its durability and strength, the Clyde candle is infused with our spiced, musky Patchouli fragrance, inspired by fragrant summer evenings overlooking the Arabian Sea at Soho House Mumbai. It's fitted with a marble lid, which doubles up as a decorative home accent.

Scent notes

Top: Patchouli

Middle: Cedarwood

Base: Moss



Dimensions

Dimensions: H9 x W13 x D13cm / H3.5 x W5.1 x D5.1"

Weight: 1kg / 2.2lbs

Packaged weight: 1kg / 2.2lbs

Details

Fragrance: Patchouli

Material: Vitoria Marble

Burn Time: Approx 70 hours

Care instructions: When lighting your candle for the first time, allow to burn for a minimum of 2 hours or until there is a completely molten wax pool. This will ensure good burn performance and minimise instances of 'tunnelling'.

For best results, burn your candle for at least 2 hours but no more than 4 hours at a time. Burn in an area free from draughts & keep wax pool free from debris such as match heads. Allow the wax pool to solidify completely before relighting the candle. Keep wicks trimmed to 5mm at all times to avoid smoking. Stop use when 10mm of wax remains.

Never leave a burning candle unattended. Keep out of reach of children and pets. Keep away from flammable materials, overhanging objects and polished surfaces. Never put in a warm place as this can cause the candle to overheat. Keep a minimum distance of 10cm between burning candles.