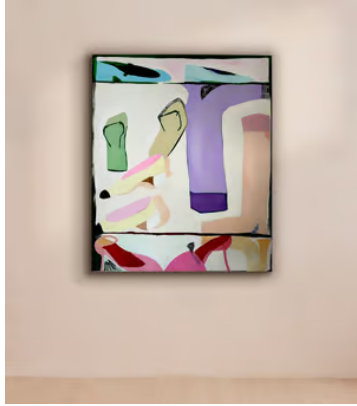


SOHO HOME



'shoes to cure your blues' by Leila Lallali

£2,842 Regular price

£2,416 Member price

The artist often takes inspiration from everyday things, like clothes and fashion, using mixed media on canvas to create this original artwork.

About the artist

Originally from Luxembourg and now based in Berlin, Leila Lallali is a self-taught artist whose works switch between figurative and abstract. Always playful in nature and rich in colour, her paintings aim to bring 'a little smirk' to the viewer's face by putting a humorous twist on everyday things.

Dimensions

Dimensions: H120 x W100 x D2cm / H47.2 x W39.4 x D0.8"

Weight: 18kg / 39.7lbs

