

SOHO HOME



'the Tip Of The Sentimental Iceberg' By Jessica Matier

£3,526

Regular

£2,997

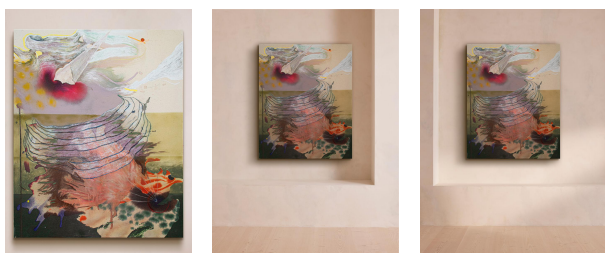
Membership

Product details

A mix of spray paint, watercolours, pastel and acrylic on canvas creates an illustration of the suppression and release of emotions.

About the artist

Graduating from New York's prestigious Parsons School of Design, Jessica Matier started out working with collage and watercolours. Since then, the artist has moved into mixed-media artworks, using a blend of psychology, religion and her own spirituality as inspiration.



Dimensions

Product dimensions: H112 x W91cm / H44 x W36"

Product weight: 5kg / 11lbs

Details

Frame included: No