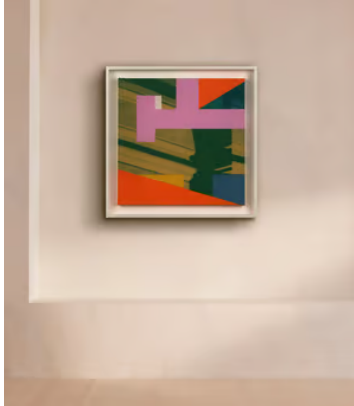
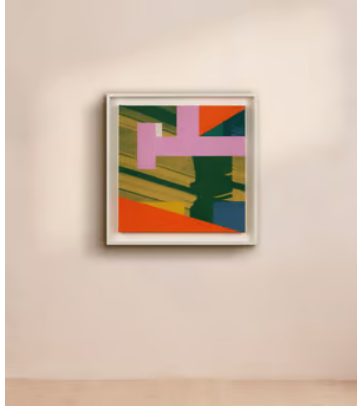
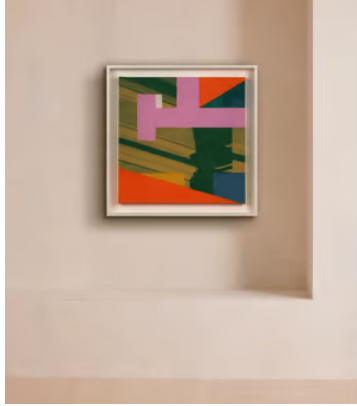


SOHO HOME



'Plan Pink' by Michelle House

£2,860 Regular price

£2,431 Member price

Imagery from the artist's photographs and hand-cut stencils are hand-printed in layers applied in varying opacity.

One in a trio of artworks called the Plan series, Plan Pink was chosen and hung in the RWA 167th Annual Open Exhibition in 2019. The series is inspired by footprints of buildings, architectural plans and geometric forms and the voids in between - the spaces we inhabit, leave behind, and pass through.

About the artist

With a passion for print and colour, London-based abstract artist Michelle House creates unique prints by applying vibrant pigments and dyes to natural materials. Both her printed and painted artworks often use imagery taken from her own photography.

Dimensions

Dimensions: H60 x W60 x D5cm / H24 x W24 x D2"

Weight: 5kg / 11lbs

Details

Frame: Framed in a white, painted wooden box frame with anti-reflective glass.

Frame included: Yes