



Noelle Sectional Armchair, Velvet Mustard, Us

£2,495

Regular

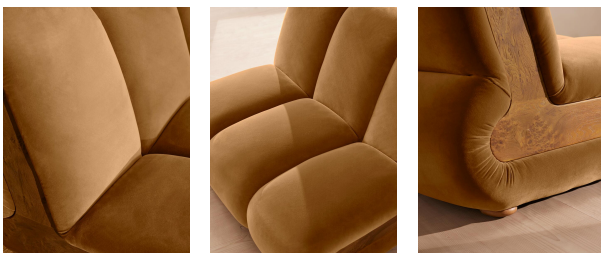
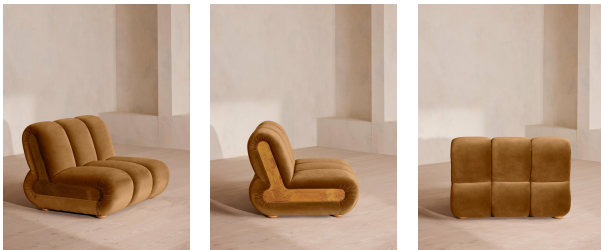
£2,121

Membership

Product details

Designed to adapt to any living space, the Noelle modular sofa comprises of straight and curved modules to create the shape you desire, or alternatively a generous armchair if used alone. Rich velvet upholstery is complemented with aged Pippy Oak veneer sides that have a burl finish, while its statement curved shape takes its design cues from the 1970s interiors of 180 House.

- Curved armchair
- Cotton velvet upholstery
- Aged Pippy Oak veneer
- Burl finish
- Inspired by 180 House



Dimensions

Product dimensions: H79 x W174 x D104cm / H31 x W69 x D41"

Product weight: 68kg / 149.9lbs

Packaged or boxed dimensions: H65 x W111 x D85cm / H25.6 x W43.8 x D33.5"

Packaged or boxed weight: 65kg / 143.3lbs

Number of boxes: 1

* Box 1 : H85 x W111 x D106cm / H33.5 x W43.8 x D41.8"

Details

Assembled size: H31 x W69 x D41 in

Assembly required: Yes

Care instructions: Professional upholstery cleaning

Composition: 85% Cotton, 15% Polyester

Fabric: 85% Cotton, 15% Polyester

Feet: Oak

Filling: Foam with fiber

Frame: Engineered Hardwood

Removable cushions: No

Removable legs: No

Seat depth: 58cm

Seat height: 40cm

Seat width: 105cm

Spring count: 9