



## Lorenzo Chandelier, Milky Glass

£1,395

Regular

£1,186

Membership

### Available in



Orange



Green



White

### Product details

Originally designed for the spaces at Soho House West Hollywood, our Lorenzo chandelier is handcrafted from pressed glass by skilled artisans. The white swirl pattern is achieved by injecting the white colour into the glass piece by piece, before being shaped by hand into discs. Once cooled, each disc is mounted on tiered, antique brass arms that surround two central glass plates for great visual effect.

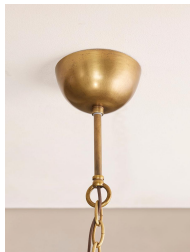
### Dimensions

Product dimensions: H29 x W76 x D76cm / H11.4 x W29.9 x D29.9"

Product weight: 19kg / 41.9lbs

Packaged or boxed dimensions: H79 x W79 x D53cm / H31.1 x W31.1 x D20.9"

Packaged or boxed weight: 25kg / 55.1lbs



## Details

Assembly required: Yes, specialist

Bulb required: 4 / E27 / 9W Maximum

Bulb(s) included: No

Care instructions: Clean with a soft dry cloth only. Do not use polishing agents, harsh chemicals or abrasive cleaners as they may damage the finish.

Always switch off the electricity supply before cleaning.

Dimmable: Yes, please consult a qualified electrician regarding compatible bulbs for your dimmer switch system

Electrician required: Yes

Lighting Certification UK: CE

Maximum height: 153cm

Minimum height: 95cm

Voltage: 220-240V