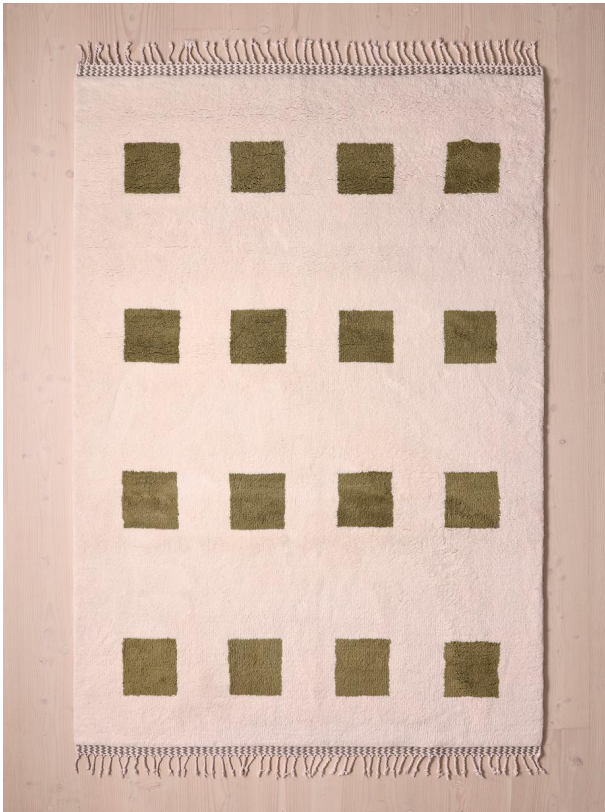


SOHO HOME



Arcus Rug, 270 X 360cm

£4,295

Regular

£3,651

Membership

Sizes

170 x 240cm, 200 x 300cm, 270 x 360cm, 20 x 30cm (Swatch)

Product details

Our Arcus design is a nod to 1970s-era shag pile rugs. Hand-knotted by skilled artisans in India with 19 knots per square inch, it has a long New Zealand wool pile, which is warm and extremely soft underfoot, making it ideal for your first step out of bed or near the sofa. The repetitive square pattern takes influences from the architectural shapes and colour palette of Soho House Rome.

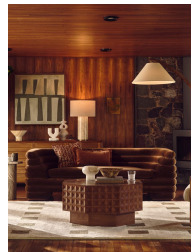
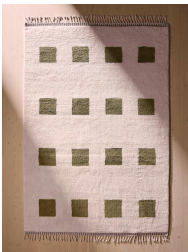
Dimensions

Product dimensions: H270 x W360 x D2cm / H8'10" x W11'9" x D0.8"

Product weight: 32kg / 70.5lbs

Packaged or boxed dimensions: H275 x W25 x D25cm / H108.3 x W9.8 x D9.8"

Packaged or boxed weight: 32kg / 70.5lbs



Details

Assembly required: No

Care instructions: Vacuum regularly on a low-power setting, using a vacuum cleaner

without a beater brush, to prevent debris from settling into roots

of the fibres. Shedding is a natural characteristic of the handmade

rugs which reduces over a period of usage. Avoid direct and

continuous exposure to sunlight. Use rug protectors under the legs

of heavy furniture to avoid flattening piles. Do not pull loose

ends. Clip them with scissors to remove. Turn carpet around

occasionally to equalise wear. Remove spills immediately; if

liquid, blot with clean, un-dyed cloth by pressing firmly around

the spill to absorb as much as possible. For

hard-to-remove stains,

professional rug cleaning is recommended. Store your rug by rolling

it front side out and wrapping in cloth for protection. Do not fold

or store rug in an airtight plastic bag. Place in dry,

well-ventilated area. with a soft, dry cloth, spot clean with mild

soap if needed; occasional professional cleaning may be required.

Do not dry clean. If loose end appears, do not pull; Instead clip

with scissors and tie a knot at the loose ends.

Avoid direct

exposure to sunlight. Rotate rug occasionally to equalize wear, if

the rug gets wet, place it on a flat surface to dry. Store your rug

by rolling, and wrap with cloth for protection.

Rug pad

recommended.

Composition: 100% Cotton

Handmade: Yes

Pile: 100% Wool

Rug style: Geometric

Technique: Hand Knotted