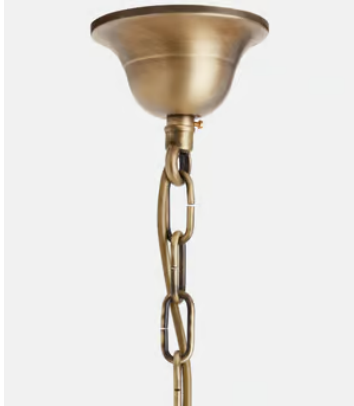


# SOHO HOME



## Ina Chandelier

£3,995 Regular price

£3,396 Member price

As seen at DUMBO House, our Ina chandelier is handmade from Venetian glass, which is mouth-blown by skilled artisans in Venice using age-old tools and techniques. The three-tiered chandelier features petal-like white glass segments suspended from an aged, brass-finish iron frame. Hang it in a living area to bring the elegance of Soho House West Hollywood into your home.

### Dimensions

**Dimensions:** H61 x W69 x D69cm / H24 x W27.2 x D27.2"

**Weight:** 40kg / 88.2lbs

**Packaged dimensions:** H62 x W62 x D62cm / H24.4 x W24.4 x D24.4"

**Packaged weight:** 40kg / 88.2lbs

**Number of boxes:** 2

- **Box 1:** H62 x W62 x D62cm / H24.4 x W24.4 x D24.4"
- **Box 2:** H55 x W75 x D50cm / H21.7 x W29.5 x D19.7"

### Details

**Assembly required:** Yes, specialist

**Bulb required:** 7 / E14 / 9W Maximum

**Bulb(s) included:** No

**Ceiling rose diameter:** 11cm

**Dimmable:** Yes, please consult a qualified

**Electrician required:** Yes

**Height adjustable:** Yes

**Lighting Certification UK:** CE

**Maximum height:** 110cm

**Minimum height:** 60cm

**Voltage:** 220-240V

**Care instructions:** Clean with a soft dry cloth only. Do not use polishing agents, harsh chemicals or abrasive cleaners as they may damage the finish. Always switch off the electricity supply before cleaning.