



Maria Alpaca Throw, Burnt Orange

£195 Regular

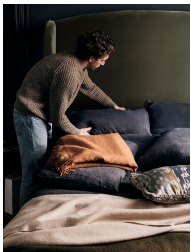
£156 Membership

Available in



Product details

The Maria throw is made from 100% alpaca wool for premium softness. It has subtle fringing at the edges and references the textile pieces at our country houses, Babington House and Soho Farmhouse. Place it on a sofa or armchair, ready to hunker down at home.



Dimensions

Product dimensions: H172 x W130 x D1cm / H67.7 x W51.2 x D0.4"

Product weight: 1kg / 2.2lbs

Packaged or boxed dimensions: H35 x W34 x D6cm / H13.8 x W13.4 x D2.4"

Packaged or boxed weight: 1kg / 2.2lbs

Details

Care instructions: Dry clean only

Composition: 100% Baby Alpaca

Construction: Woven

Fabric: Wool

Handmade: Yes

Pile: Wool