



Pink 13 Nashville House, Matt 2.5l

£45

Regular

£38

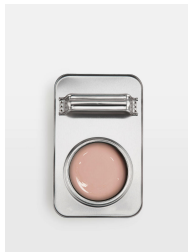
Membership

Product details

Pink 13 Nashville House: A dusky pink with a hint of grey that draws the light in and gives a sense of warmth and character. Inspired by Soho House Nashville, this Texan house is filled with exposed brick, reclaimed timber floors and lashings of velvet that evoke country glam with a rock 'n' roll twist.

- Pink 13 Nashville House Paint 2.5 Litres
- Matte finish
- Lick x Soho House collaboration
- As part of a curated exclusive palette
- Inspired by Soho House Nashville

Try a Lick x Soho House paint sample, created with a peel-and-stick formula to allow you to try each colour out on different walls, in different lights, without leaving any marks.



Dimensions

Product dimensions: H16 x W17 x D11cm / H6.3 x W6.7 x D4.3"

Product weight: 3.5kg / 7.7lbs



Details

Application: Creates a flawless finish in two coats. A combination of durability with washability and a low VOC, water-based formula. Paint is self-priming and multi-surface, meaning it can be used on most surfaces, including bathrooms, kitchens, wooden furniture, uPVC, doors, radiators, laminate and MDF (requires prep), low spatter and mildew resistant. Suitable for paint brushes, rollers and spray.

Prep: All surfaces must be cured, firm and dry. Use warm soapy water to remove all dirt, oil or other contamination. Sand glossy surfaces and remove dust.

VOC: 30g/L

Coverage: Paint has a coverage of 250 -400 sq ft per gallon depending on porosity of substrate surface texture and application method. A 1G tin can cover up to 400 sq ft.

Composition: Eco-friendly and non-toxic, formulated with a low VOC and low odour.

Drying time: At 18-degrees centigrade and 65% humidity, touch dry in 2 hours. Re-coat after 4 hours.

Sheen: 5% for matt paint, 15% for eggshell paint

Storage: Protect from frost. Keep out of reach from children. After first use, re-seal and use within six months. Do not screw the metal lid back on once the rim is exposed to paint. Store at room temperature.

Disposal: Waste packaging should be recycled. Empty containers can be recycled.