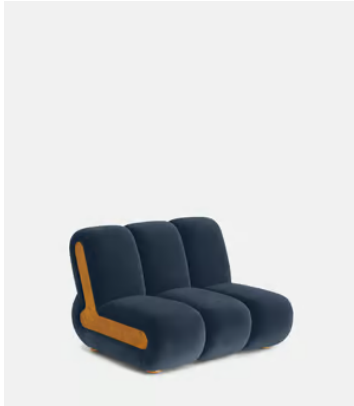
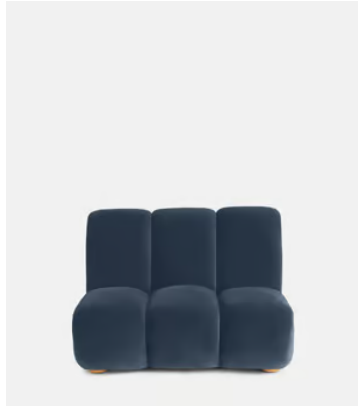


# SOHO HOME



## Noelle Modular Sofa, Straight Module, Velvet Grey Blue

€3,200 Regular price

€2,720 Member price

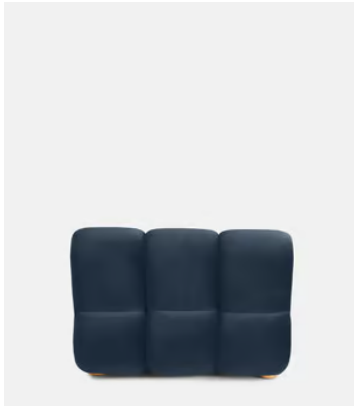
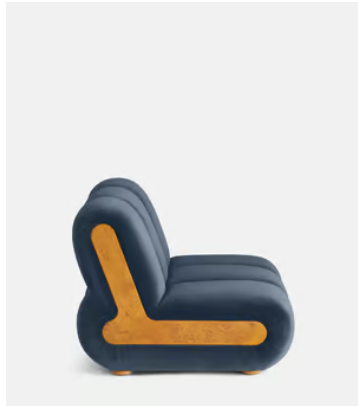
### Dimensions

**Product dimensions:** H78.74 x W105.41 x D99.695cm / H31 x W42 x D39"

**Product weight:** 52.6kg / 116lbs

**Packaged or boxed dimensions:** H85 x W111 x D106cm / H33.5 x W43.8 x D41.8"

**Packaged or boxed weight:** 65kg / 143.3lbs



### Details

**Assembly required:** Yes

**Care instructions:** Professional upholstery cleaning

**Composition:** Frame: Engineered Hardwood. Feet: Oak. Filling: Foam with fiber. Fabric: 85% cotton, 15% polyester.

**Fabric:** 85% Cotton, 15% Polyester

**Feet:** Oak

**Frame:** Engineered Hardwood

**Legs:** Oak

**Removable cushions:** No

**Removable legs:** No

**Seat depth:** 57.8cm

**Seat height:** 40cm

**Seat width:** 105.4cm

**Spring count:** 9

### Available in 10 velvets



Rust



Lichen



Camel



Royal Blue



Porcelain



Mustard



Olive



Taupe



Antique Rose



Grey Blue

### Available in 4 boucles



Natural



Kelp

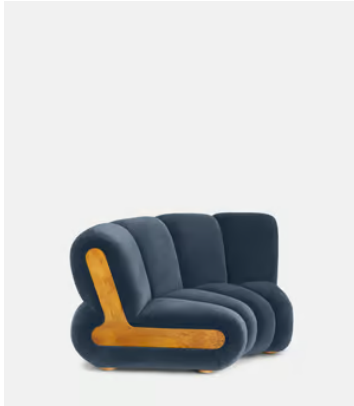
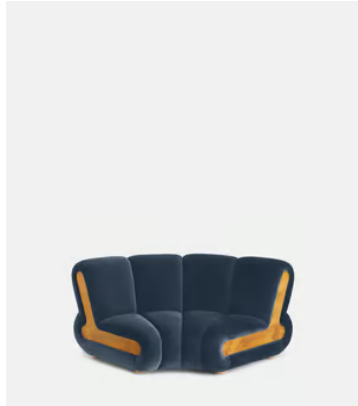


Pistachio



Coral

# SOHO HOME



## Noelle Modular Sofa, Curved Module, Velvet Grey Blue

€3,600 Regular price

€3,060 Member price

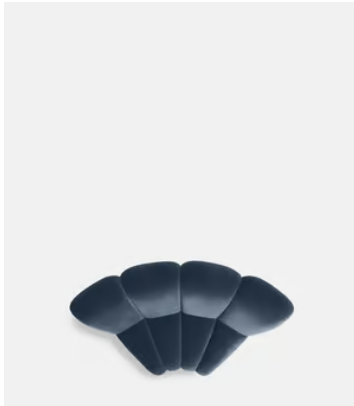
### Dimensions

**Product dimensions:** H78.74 x W173.99 x D103.505cm / H31 x W69 x D41"

**Product weight:** 67.6kg / 149lbs

**Packaged or boxed dimensions:** H85 x W180 x D109cm / H33.5 x W70.8 x D43"

**Packaged or boxed weight:** 84kg / 185.2lbs



### Details

**Assembly required:** Yes

**Care instructions:** Professional upholstery cleaning

**Composition:** Frame: Engineered Hardwood. Feet: Oak. Filling: Foam with fiber. Fabric: 85% cotton, 15% polyester.

**Fabric:** 85% Cotton, 15% Polyester

**Feet:** Oak

**Frame:** Engineered Hardwood

**Legs:** Oak

**Removable cushions:** No

**Removable legs:** No

**Seat depth:** 57.8cm

**Seat height:** 40cm

**Seat width:** 55.9cm

**Spring count:** 12

### Available in 10 velvets



Rust



Lichen



Camel



Royal Blue



Porcelain



Mustard



Olive



Taupe



Antique Rose



Grey Blue

### Available in 4 boucles



Natural



Kelp



Pistachio



Coral

# SOHO HOME



## Noelle End Table

€1,300 Regular price

€1,105 Member price

Part of our Noelle modular sofa range, the Noelle end table has been crafted in aged Pippy Oak veneer for a lived-in look and feel. Resting on book-matched burl feet, this low occasional style takes its design cues from 180 House and is ideal placed beside our Noelle sofa or another sofa from the Soho Home collection.



### Dimensions

**Product dimensions:** H26 x W73 x D55cm / H10.2 x W28.7 x D21.7"

**Product weight:** 15kg / 33.1lbs

**Packaged or boxed dimensions:** H36 x W85 x D67cm / H14.2 x W33.5 x D26.4"

**Packaged or boxed weight:** 19kg / 41.9lbs

### Details

**Assembly required:** Yes

**Care instructions:** Dust often using a clean, soft, dry and lint-free cloth. Blot spills immediately and wipe with a clean, damp, cloth. We do not recommend the use of chemical cleansers, abrasives or furniture polish. Avoid contact with water and other liquids.

**Feet:** Plastic Glide

**Frame:** Oak Wood

**Material:** Oak Wood, Plywood and Pippy Oak Veneer

**Removable legs:** Yes

### Available in 10 velvets



Rust



Lichen



Camel



Royal Blue



Porcelain



Mustard



Olive



Taupe



Antique Rose



Grey Blue

### Available in 4 boucles



Natural



Kelp



Pistachio



Coral