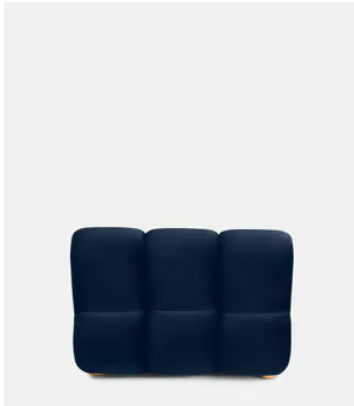
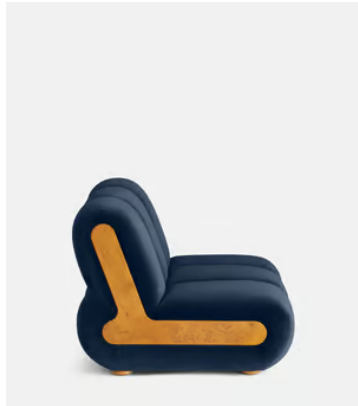
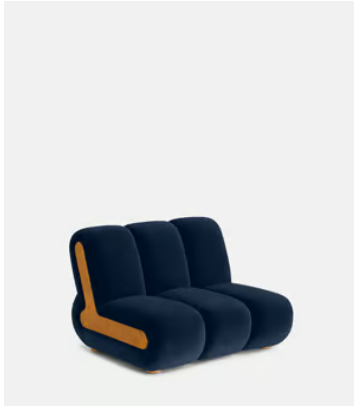
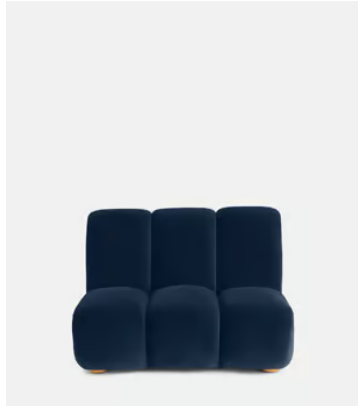


SOHO HOME



Noelle Modular Sofa, Straight Module, Velvet Royal Blue

€3,200 Regular price

€2,720 Member price

Dimensions

Product dimensions: H78.74 x W105.41 x D99.695cm / H31 x W42 x D39"

Product weight: 52.6kg / 116lbs

Packaged or boxed dimensions: H85 x W111 x D106cm / H33.5 x W43.8 x D41.8"

Packaged or boxed weight: 65kg / 143.3lbs

Details

Assembly required: Yes

Care instructions: Professional upholstery cleaning

Composition: Frame: Engineered Hardwood. Feet: Oak. Filling: Foam with fiber. Fabric: 85% cotton, 15% polyester.

Fabric: 85% Cotton, 15% Polyester

Feet: Oak

Frame: Engineered Hardwood

Legs: Oak

Removable cushions: No

Removable legs: No

Seat depth: 57.8cm

Seat height: 40cm

Seat width: 105.4cm

Spring count: 9

Available in 10 velvets



Rust



Lichen



Camel



Royal Blue



Porcelain



Mustard



Olive



Taupe



Antique Rose



Grey Blue

Available in 4 boucles



Natural



Kelp

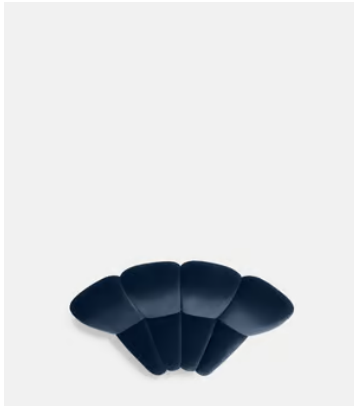
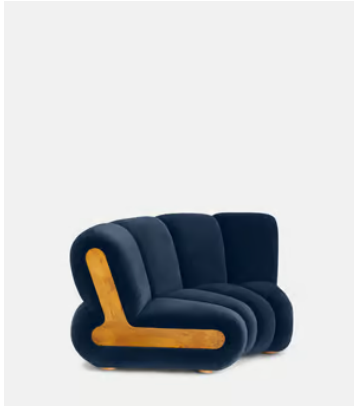
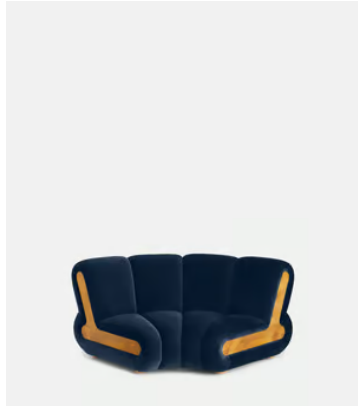


Pistachio



Coral

SOHO HOME



Noelle Modular Sofa, Curved Module, Velvet Royal Blue

€3,600 Regular price

€3,060 Member price

Dimensions

Product dimensions: H78.74 x W173.99 x D103.505cm / H31 x W69 x D41"

Product weight: 67.6kg / 149lbs

Packaged or boxed dimensions: H85 x W180 x D109cm / H33.5 x W70.8 x D43"

Packaged or boxed weight: 84kg / 185.2lbs

Details

Assembly required: Yes

Care instructions: Professional upholstery cleaning

Composition: Frame: Engineered Hardwood. Feet: Oak. Filling: Foam with fiber. Fabric: 85% cotton, 15% polyester.

Fabric: 85% Cotton, 15% Polyester

Feet: Oak

Frame: Engineered Hardwood

Legs: Oak

Removable cushions: No

Removable legs: No

Seat depth: 57.8cm

Seat height: 40cm

Seat width: 55.9cm

Spring count: 12

Available in 10 velvets



Rust



Lichen



Camel



Royal Blue



Porcelain



Mustard



Olive



Taupe



Antique Rose



Grey Blue

Available in 4 boucles



Natural



Kelp



Pistachio



Coral

SOHO HOME



Noelle End Table

€1,300 Regular price

€1,105 Member price

Part of our Noelle modular sofa range, the Noelle end table has been crafted in aged Pippy Oak veneer for a lived-in look and feel. Resting on book-matched burl feet, this low occasional style takes its design cues from 180 House and is ideal placed beside our Noelle sofa or another sofa from the Soho Home collection.



Dimensions

Product dimensions: H26 x W73 x D55cm / H10.2 x W28.7 x D21.7"

Product weight: 15kg / 33.1lbs

Packaged or boxed dimensions: H36 x W85 x D67cm / H14.2 x W33.5 x D26.4"

Packaged or boxed weight: 19kg / 41.9lbs

Details

Assembly required: Yes

Care instructions: Dust often using a clean, soft, dry and lint-free cloth. Blot spills immediately and wipe with a clean, damp, cloth. We do not recommend the use of chemical cleansers, abrasives or furniture polish. Avoid contact with water and other liquids.

Feet: Plastic Glide

Frame: Oak Wood

Material: Oak Wood, Plywood and Pippy Oak Veneer

Removable legs: Yes

Available in 10 velvets



Rust



Lichen



Camel



Royal Blue



Porcelain



Mustard



Olive



Taupe



Antique Rose



Grey Blue

Available in 4 boucles



Natural



Kelp



Pistachio



Coral