



Maria Alpaca Throw, Burnt Orange

€255 Regular

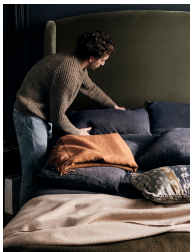
€204 Membership

Available in

- Oatmeal
- Burnt Orange
- Ochre
- Olive
- Sage

Product details

The Maria throw is made from 100% alpaca wool for premium softness. It has subtle fringing at the edges and references the textile pieces at our country houses, Babington House and Soho Farmhouse. Place it on a sofa or armchair, ready to hunker down at home.



Dimensions

Product dimensions: H172 x W130 x D1cm / H67.7 x W51.2 x D0.4"

Product weight: 0.6kg / 1.3lbs

Packaged or boxed dimensions: H35 x W34 x D6cm / H13.8 x W13.4 x D2.4"

Packaged or boxed weight: 2kg / 4.4lbs

Details

Care instructions: Dry clean only

Composition: 100% Baby Alpaca

Construction: Woven

Fabric: Wool

Handmade: Yes

Pile: Wool