



Lorenzo Chandelier, Amber

£1,395

Regular

£1,186

Membership

Available in



Orange



Green

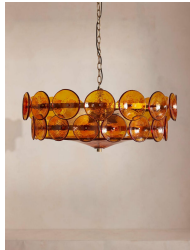


White

Product details

Originally designed for the spaces at Soho House West Hollywood, our Lorenzo chandelier is handmade from pressed glass by skilled artisans. Each glass disc is then mounted on tiered, antique brass arms that surround two central glass plates for great visual impact above a dining table or living area.

- Tiered chandelier pendant
- Handcrafted from pressed glass discs
- Amber finish
- Also available in other colours
- Antique brass finish
- Adjustable chain
- As seen in Soho House West Hollywood



Dimensions

Product dimensions: H29 x W76 x D76cm / H11.4 x W29.9 x D29.9"

Product weight: 19kg / 41.9lbs

Packaged or boxed dimensions: H54 x W79 x D79cm / H21.3 x W31.1 x D31.1"

Packaged or boxed weight: 25kg / 55.1lbs

Details

Assembly required: Yes, specialist

Bulb required: 4 / E27 / 9W Maximum

Bulb(s) included: No

Care instructions: Clean with a soft dry cloth only. Do not use polishing agents,

harsh chemicals or abrasive cleaners as they may damage the finish.

Always switch off the electricity supply before cleaning.

Ceiling rose diameter: 13.4cm

Dimmable: Yes, please consult a qualified electrician regarding compatible bulbs for your dimmer switch system

Electrician required: Yes

Height adjustable: Yes

Maximum height: 153cm

Minimum height: 95cm

Voltage: 220-240V